

Refinite

A Tradition of Continuous  
Improvement

[www.refinitewater.com](http://www.refinitewater.com)



# Pure Water by Refinite

The Refinite Division of Water Engineering Group has been committed to clean water beginning in Ralston, Nebraska, in 1918. Today, Refinite produces all types of water purification systems and equipment for process and potable applications in municipal, industrial, and environmental markets.

With modern, efficient, up-to-date manufacturing facilities, and a team of well trained regional representatives, Refinite is able to supply turnkey solutions for even the most difficult water problems found in cities, towns and factories nationwide.

Working closely with project engineers from the conceptual phase, Refinite can provide customized detailed CAD drawings and specifications of our equipment. We also have the capability of replicating other manufacturers' designs. Our primary products include ground water and surface water treatment plants, multi-media filters, contactors, water softeners, and ion-exchange systems. Pressure vessels are fabricated in vertical, horizontal, or multi-cell configurations by AWS and ASME certified welders.

For a century, Refinite has been the preferred supplier to companies in the pharmaceutical, textile, electronics, food, and chemical industries, and to both public and private utilities and municipalities.

Refinite Division / Water Engineering Group

**1 (803) 240-3909**

[www.refinitewater.com](http://www.refinitewater.com)



# Refinite

# QUALITY MANAGEMENT

- ASME vessels inspected by third party Authorized Inspection Agency (AIA) which reviews and signs off on the designs and final QC documents.
- Quality Control system has been reviewed and approved by the AIA and by ASME.
- Welding operations & vessel design overseen by a Professional Engineer (PE) and a Certified Welding Inspector (CWI), certified by the American Welding Society (AWS).
- Painting operations overseen by a Certified Inspector, certified by the National Association of Corrosion Engineers (NACE).

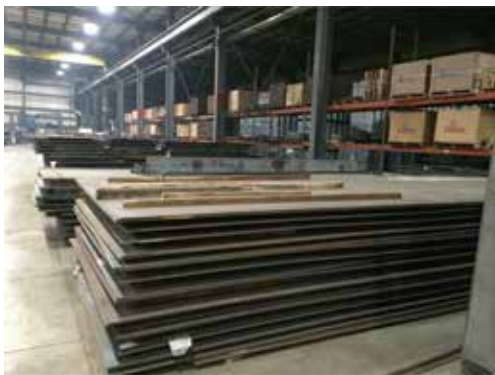
# CERTIFICATIONS

- ASME U-Stamp Certification
- ASME S-Stamp Certification
- National Board R-Stamp Certification
- NSF ANSI STD 61 Certified Epoxy Linings

ASME	- American Society of Mechanical Engineers
NSF	- NSF International (Develops public health standards and certifications that help protect food, water, consumer products and the environment.
ANSI	- American National Standards Institute (Oversees the development of voluntary consensus standards for products)

# Refininite

# INVENTORY - HEADS & SHELLS

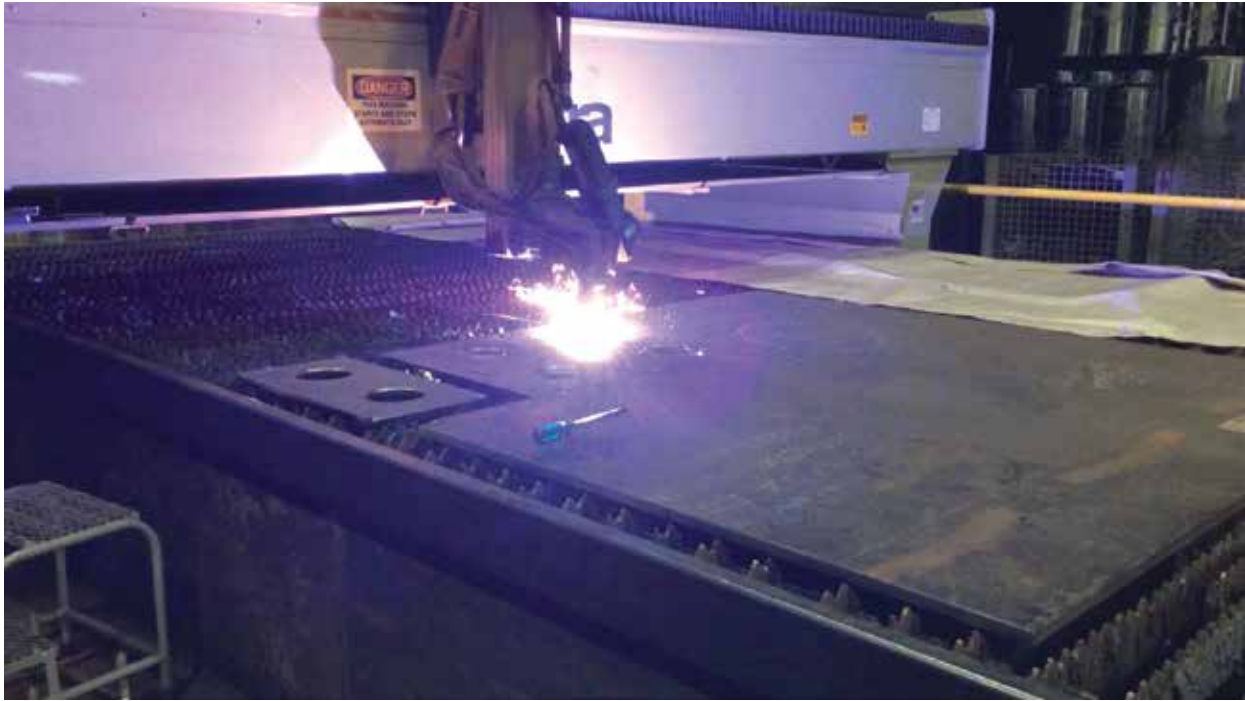


# MATERIAL PREPARATION



# Refininite

# PLASMA SHEET CUTTING



# ROLLING STEEL



# Refinite

## HEAD TO SHELL ASSEMBLY



## HEAD WELDING

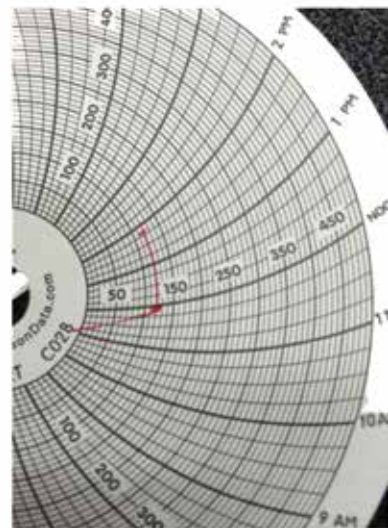


# Refinite

# FABRICATION



# ASME - HYDRO TEST



# Refininite

# BLASTING



- Interiors are blasted to SSPC-SP5, (NACE 1)
  - Full White Metal Blast
- Exteriors are blasted to SSPC-SP10, (NACE)
  - Near White Metal Blast

NACE - NACE International is recognized globally as the premier authority for corrosion control solutions.

# PAINT PREPARATION



# Refinite



# PAINT - LINING



# PAINT LINING INSPECTION



Mil Thickness Test

Holiday Test

# Refininite

## PAINT - EXTERIOR



## INTERNAL ASSEMBLY



# Refininite

# EXTERNAL ASSEMBLY



# SHIPMENTS



Refinite Division / Water Engineering Group

Spencer Bush

1 (803) 240-3909

[www.refinitewater.com](http://www.refinitewater.com)

"Stain-Less" is our goal -- Pure water is our solution.